

STS National Database:

ACSD QI Series

July 17, 2024

Agenda

Welcome and Introductions

STS Updates

IQVIA Upcoming Releases

Exceptional Risk Update

STS Updates

July Training Manual Posted

AQO Registration is Open

MultiValve +/- CAB planned
for Harvest 3 (ProcID 9&10)

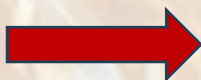
Important Dates



Harvest 2024 Dates

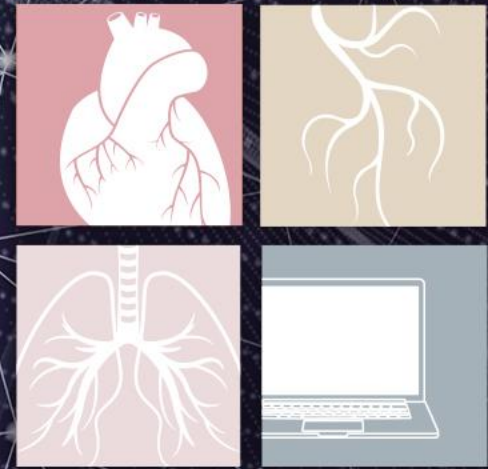
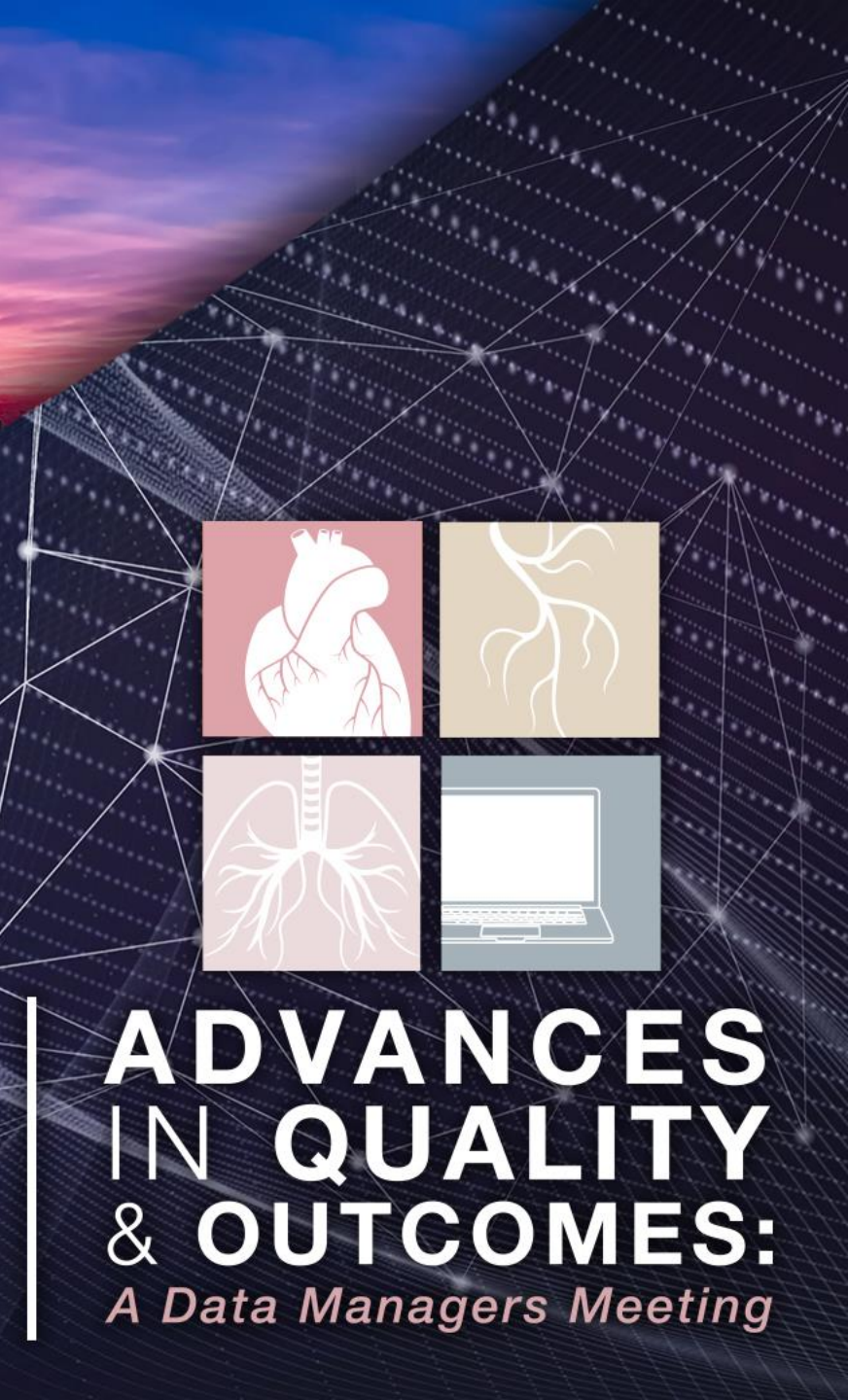
2024 Harvest

Term	Harvest Submission Window Close	Opt-Out Date	Includes Procedures Performed Through:	Report Posting	Comments
Harvest 1	2/23/2024	2/27/2024	12/31/2023	Spring 2024	Star Rating
Harvest 2	6/7/2024	6/11/2024	3/31/2024	Summer 2024	
Harvest 3	8/23/2024	8/27/2024	6/30/2024	Fall 2024	Star Rating
Harvest 4	11/22/2024	11/26/2024	9/30/2024	Winter 2024	



Data Submission Open is continuous for all harvest terms. Submission Close occurs at 11:59 p.m. Eastern on the date listed.





JOIN US IN MUSIC CITY!

September 11-13 Nashville, TN
Register at sts.org/AQO

**ADVANCES
IN QUALITY
& OUTCOMES:**
A Data Managers Meeting

AQO
Registration
Now Open

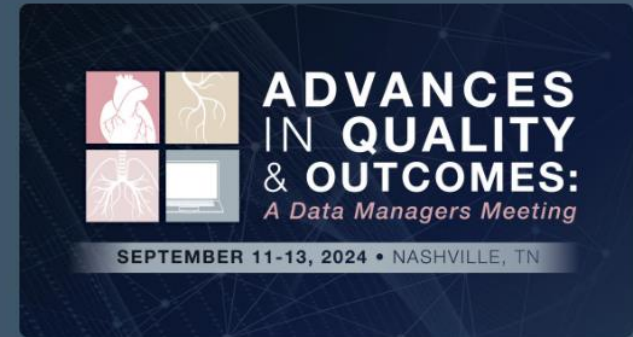
Event

2024 Advances in Quality & Outcomes: A Data Managers Meeting

Discussions on valuable research and important clinical findings with the goal of improving data collection and patient outcomes.

Register Now

Reserve Housing



Date(s)

Sep 11–13, 2024

Location

Nashville, TN

Loews Vanderbilt Hotel

Audience

Data Manager

AQO Pricing (In-Person and Virtual)

In-Person Pricing

Virtual Pricing

In-Person Pricing

Category	Early Bird Discounts (through May 16)	Standard Rate (May 17 - September 14, 2024)
STS Member - One Day	\$700	\$800
STS Member - Two Day	\$1,050	\$1,250
STS Member - Three Day	\$1,300	\$1,600
Non-Member - One Day	\$800	\$900
Non-Member - Two Day	\$1,250	\$1,450
Non-Member - Three Day	\$1,600	\$1,900
Industry Employee	\$750	\$750

You'll need your STS Member ID to receive the discounted member rate. Database participation differs from STS membership (e.g., Surgeon or Associate Membership). Your 6-digit STS Member ID is not your site or Database participant ID. For help with your STS Member ID, please contact [Member Services](#).

Virtual Pricing

For those unable to travel to Nashville, STS offers a virtual registration option. Registrants who choose the "virtual pass" will gain access to on-demand content and e-posters online before AQO and the recorded archive of all sessions following the conclusion of the meeting. (the virtual pass does not include live streaming.)

In the months after the meeting, each registry will host an AQO Hot Topics webinar. We will bring back meeting speakers and give virtual attendees a chance to ask questions. Conversations will touch on valuable research and best practices from STS National Database professionals, all to improve data collection and patient outcomes.

Category	Early Bird Discounts (through May 16)	Standard Rate (May 17 - September 14, 2024)
STS Member - Multi-Day	\$300	\$400
Non-Member - Multi-Day	\$400	\$500





IQVIA Updates

- Executive Summary Update for dates on Current Harvest Missingness to display rolling 12 months.
- Recheck your data before Harvest 3 Close





Exceptional Risk (EREC)





EREC

- A new process allowing surgeons to seek individual case exemptions from Database harvest analytics for extreme or exceptional risk cases with rare comorbidities.
- Notification sent to sites on June 14.
- Not intended to influence patient care decision-making
- Case must be submitted before surgery
- Will be reviewed after surgery by a team of STS Surgeon Leadership
- The decision will be communicated to the site before harvest close



EREC

- Site (Data Manager/Surgeon/Other Personnel) submit an initial request to STS via a web form
- STS will request additional information, it must be sent back to us within 3 business days
 - De-identified
 - No PHI
 - No hospital, surgeon, other provider, or any identifying information to be included
 - Only send requested information
- Following surgery, the site must submit the Op note, STS Record ID, and STS Patient ID to STS
- Failure to respond will jeopardize the site's to participate in this process



EREC

- The case must still be entered into the data warehouse (vendor, direct data entry) and submitted to IQVIA (vendors)
- The case will be removed from analysis by STS
- The analyzed data will not contain the case in any of the reports including Public Reporting
 - There will be a case discrepancy between the raw and analyzed dashboards
- Surgeon Leadership will provide an annual update on the types of cases removed from analysis

EREC – Example Cases

Cases to be considered include, but are not limited to, the following:

- Fourth-time or greater re-operative epicardial or intra-cardiac operations
- Hepatic cirrhosis with known portal hypertension manifested by clear varices on portal ultrasound
- Listed for liver or lung transplantation (listed for kidney transplantation is not an acceptable exclusion)
- Prior cardiac or lung transplantation
- More than one limb amputation (greater than phalanges)
- Prior pneumonectomy
- Implanted permanent mechanical circulatory support device (RVAD, LVAD, TAH)



Resources

- STS National Database Webpage
- STSDB_Helpdesk@sts.org (Uploader, DQR, Missing Variable, Dashboard, Password and Login)
- STS National Database Feedback Form
- Resource Documents
 - Contact Information
 - Webinar Information
 - FAQ Document
 - Go-Live Checklist
 - Tiered-level Support Document
 - *Training Videos*
 - *Link to IQVIA*
 - ckrohn@sts.org



Open Discussion

Please use the
raise-hand
function.

Please use the
Q&A Function.

We will answer as
many questions as
possible.

We encourage
your feedback and
want to hear from
you!